

BUILDING SIZE

7,768 sqft

GYMNASIUM CAPACITY

SEATING (FLOOR): 501

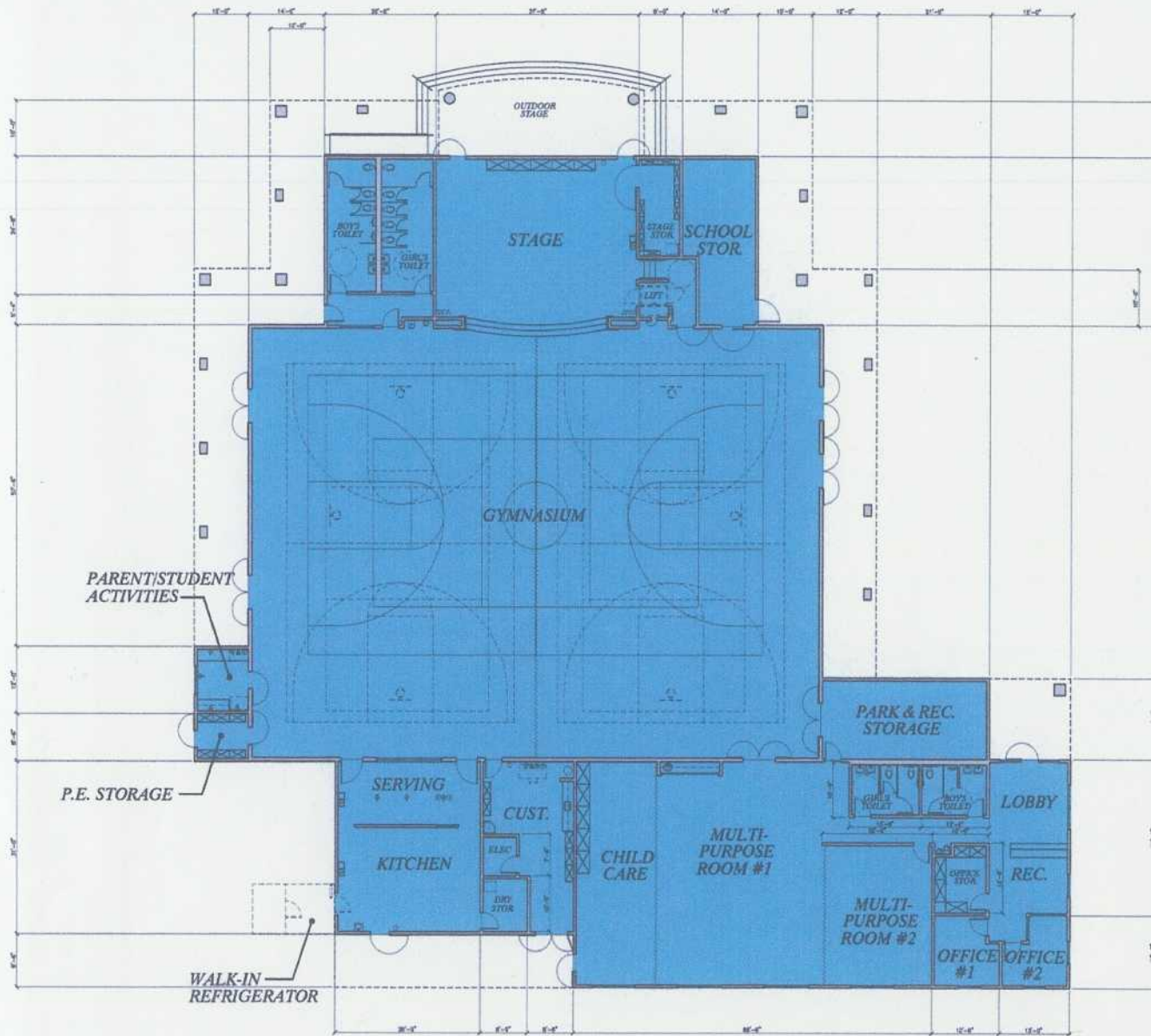
SEATING (DINING): 234

**ELEMENTARY SCHOOL #40
MULTI-PURPOSE
FLOOR PLAN**

ELK GROVE UNIFIED SCHOOL DISTRICT

December 15, 2004





BUILDING SIZE

16,437 sqft

GYMNASIUM CAPACITY

SEATING (FLOOR): 1146

SEATING (DINING): 535

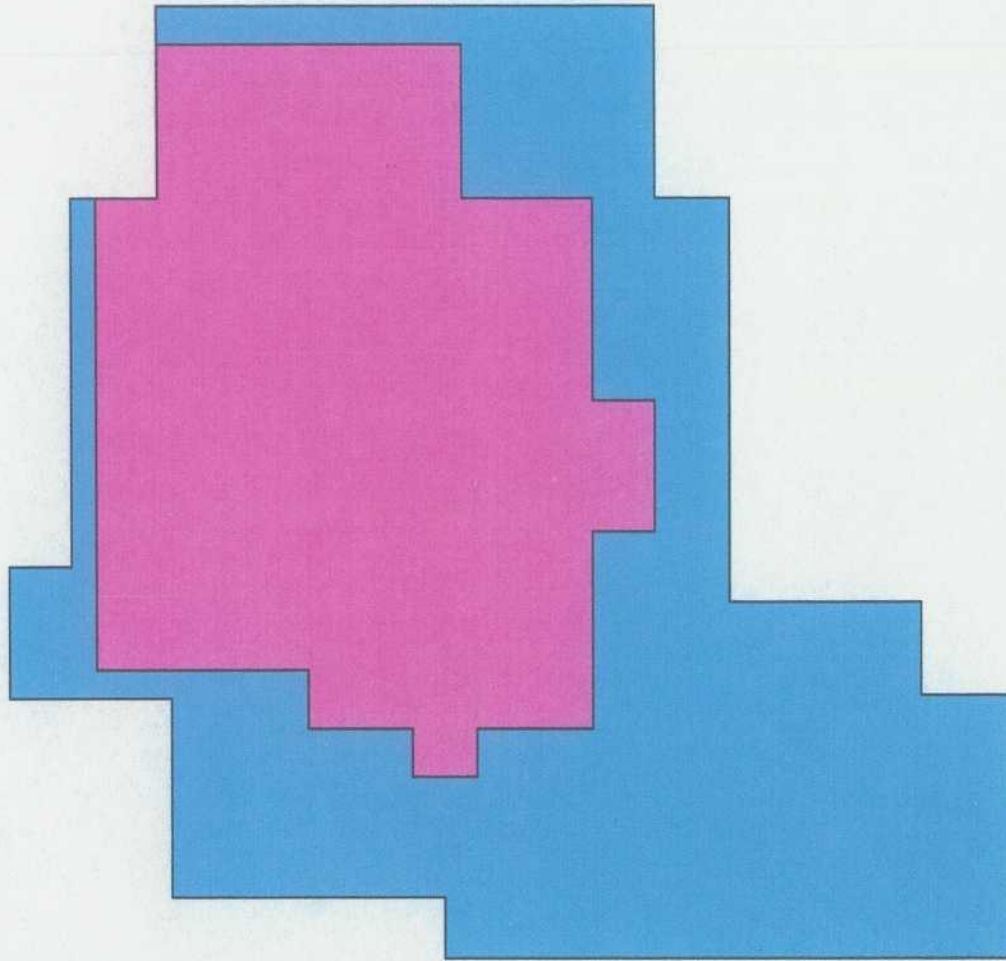
JOINT USE MULTI-PURPOSE FLOOR PLAN

ELK GROVE UNIFIED SCHOOL DISTRICT

December 15, 2004



Michael RAINFORTH ■ Jeffrey GRAU
ARCHITECTS
3250 Ramon Circle ■ Sacramento, CA 95827
(916) 390-7990 ■ Fax: (916) 390-7996



BUILDING SIZE COMPARISON

JOINT-USE AREA: 16,437 sqft

ES #40 AREA: 7,768 sqft

**JOINT-USE vs. ES #40
MULTI-PURPOSE
AREA COMPARISON**

ELK GROVE UNIFIED SCHOOL DISTRICT

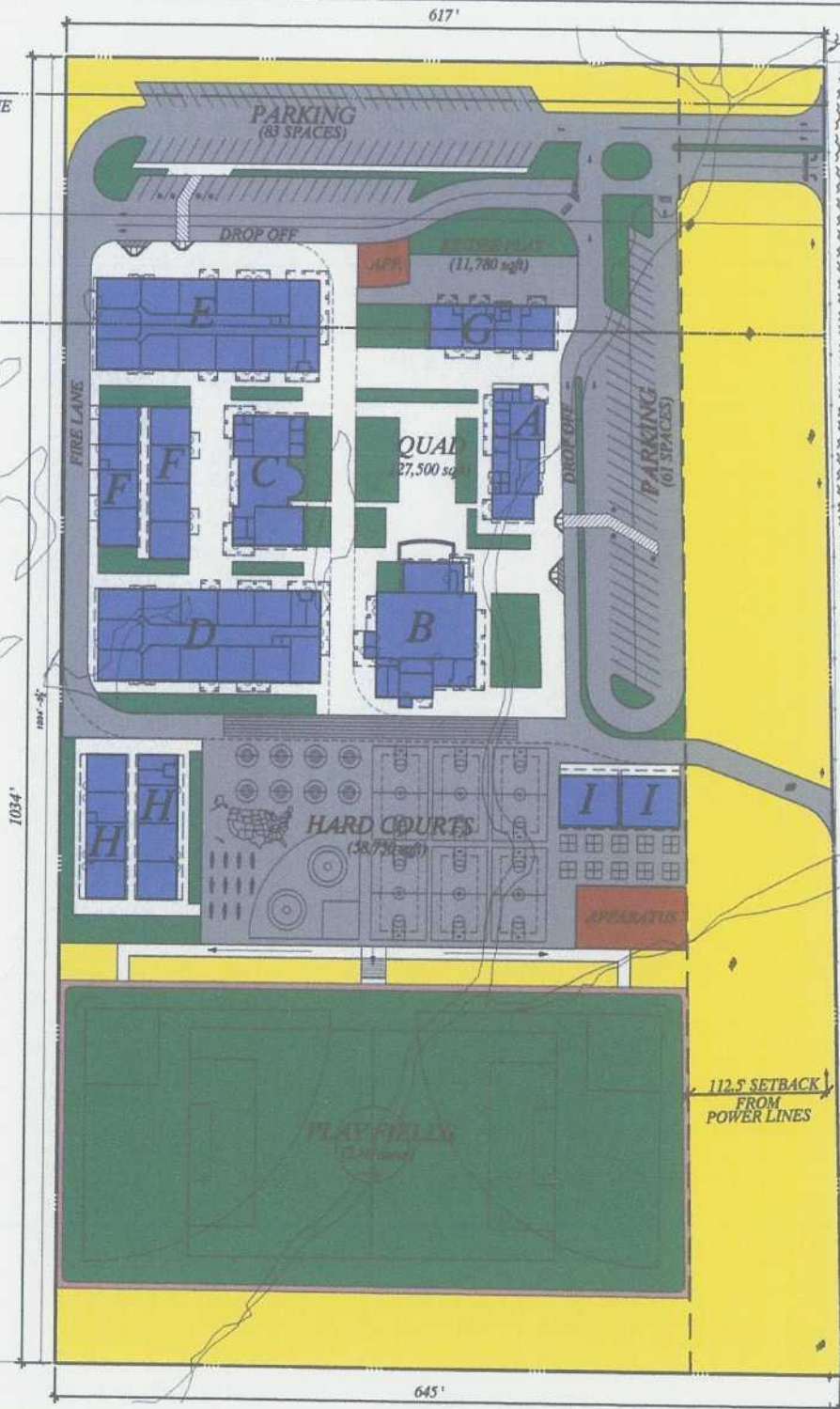
December 15, 2004



Michael RAINFORTH ■ Jeffrey GRAU
ARCHITECTS
3350 Blumens Circle ■ Sacramento, CA 95827
(916) 368-7990 ■ Fax: (916) 368-7996

SCHEME #11
PROPERTY LINE

PARCEL LINE



PROPOSED MASTER PLAN SCHEME #14 ELEMENTARY SCHOOL #34

ELK GROVE UNIFIED SCHOOL DISTRICT

December 3



BUILDING LEGEND

- A ADMINISTRATION
- B MULTI-PURPOSE
- C LIBRARY
- D PERMANENT CLASSROOMS
- E PERMANENT CLASSROOMS
- F RELOCATABLE CLASSROOMS
- G KINDERGARTEN
- H RELOCATABLE CLASSROOMS
- I RELOCATABLE DAY CARE

**SITE AREA = 14.96 acres

